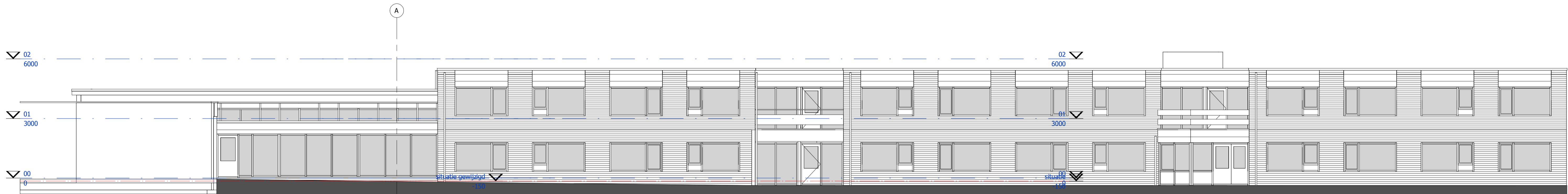
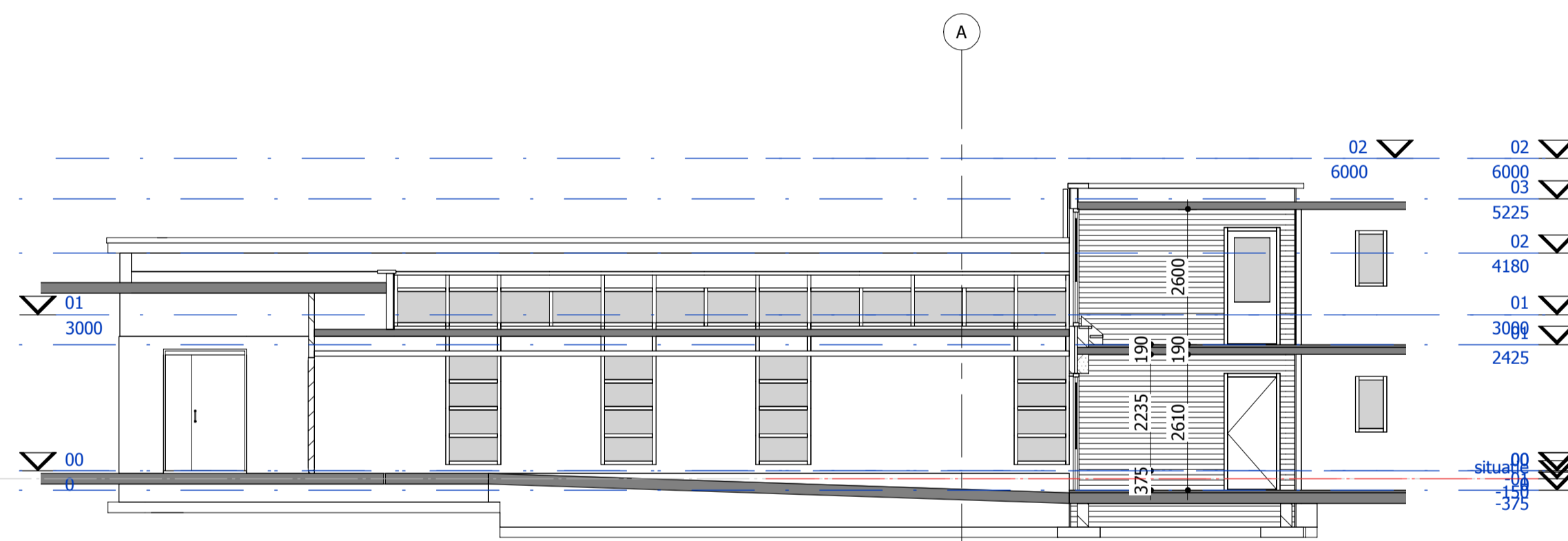




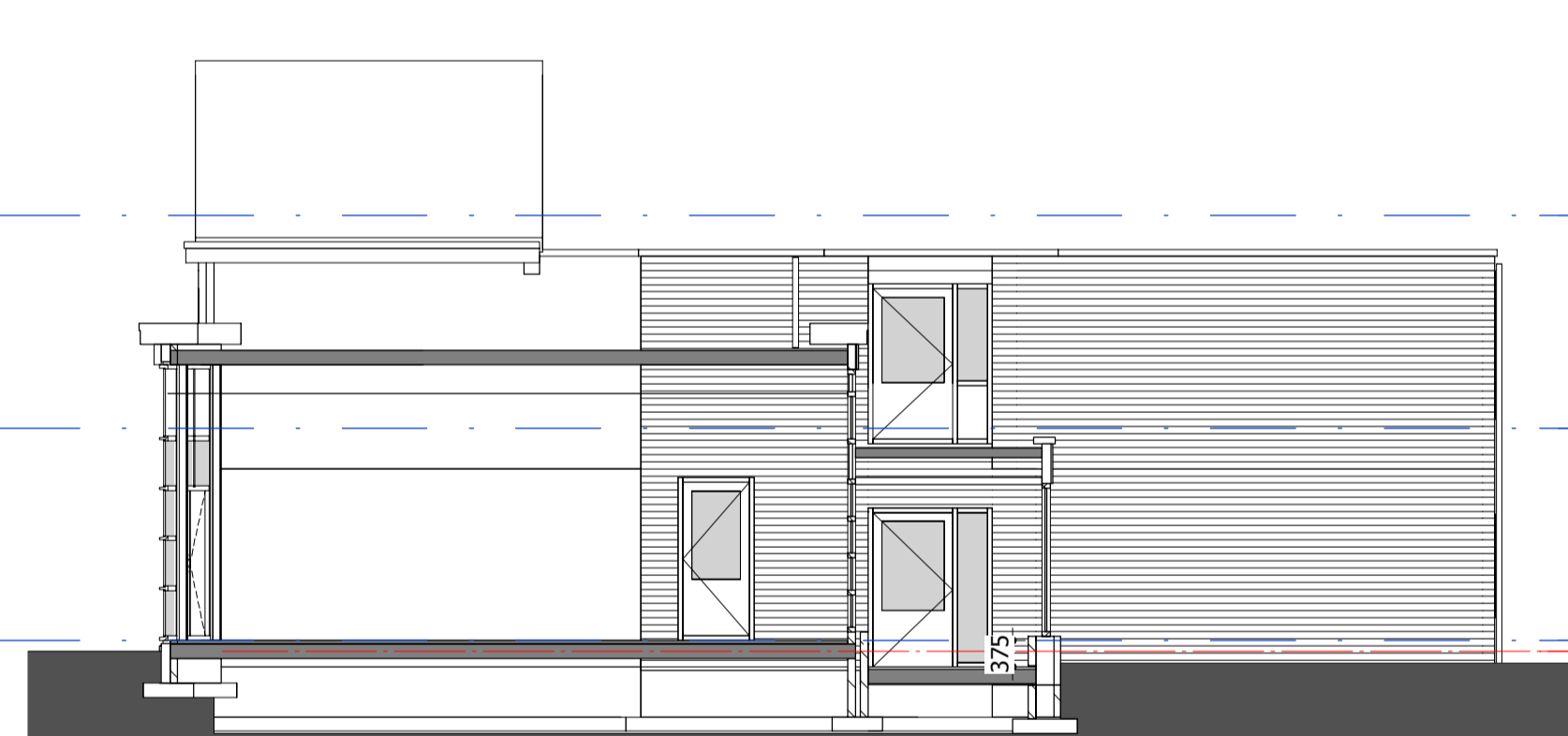
RECHTERZIJGEVEL



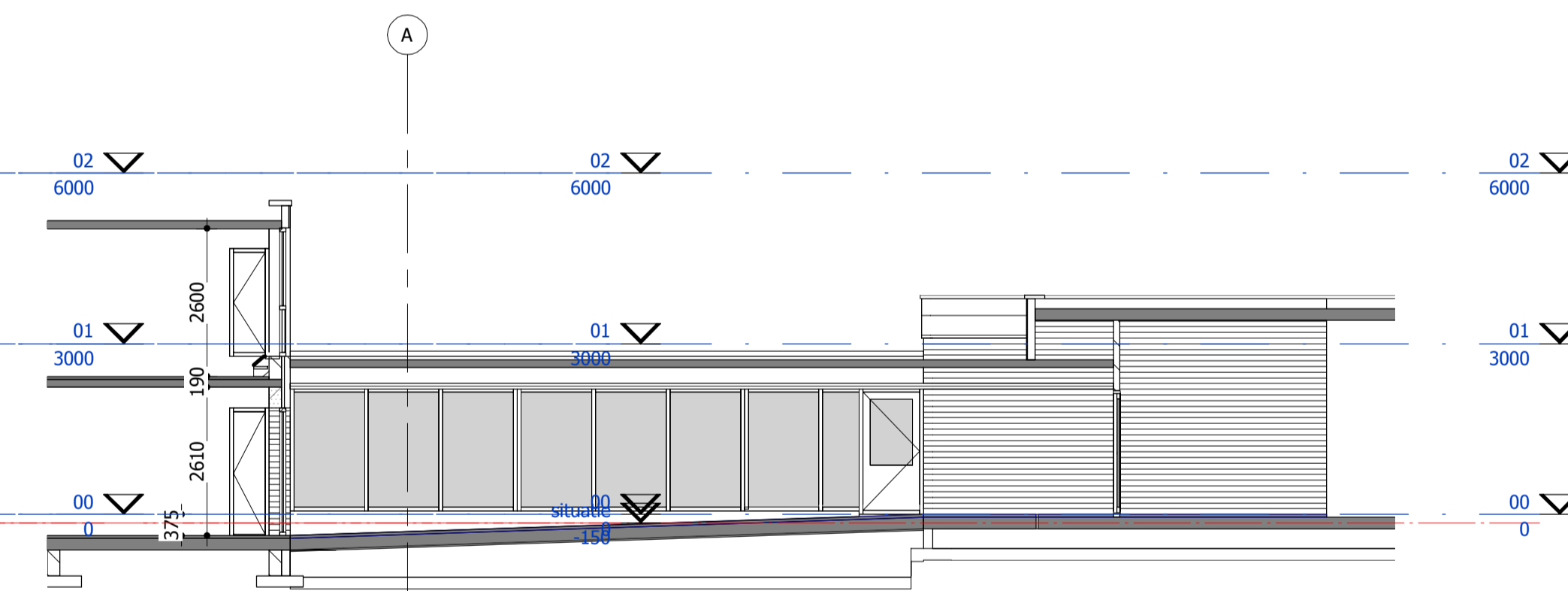
LINKERZIJGEVEL



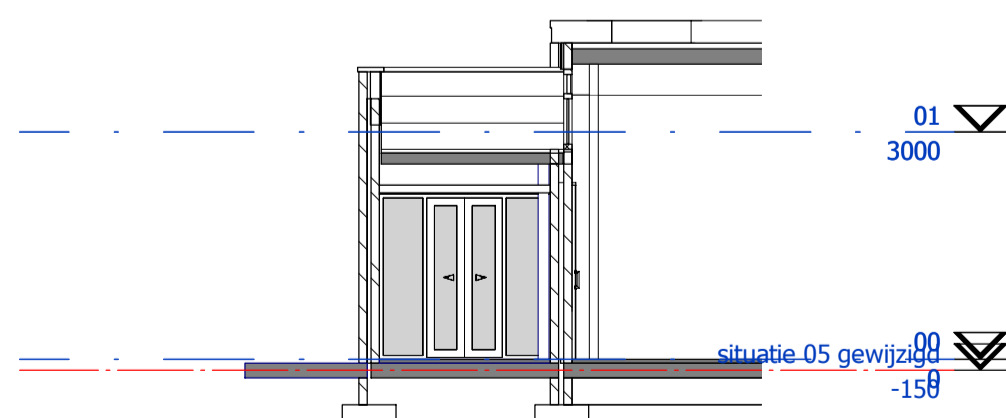
DRSN A\_best.



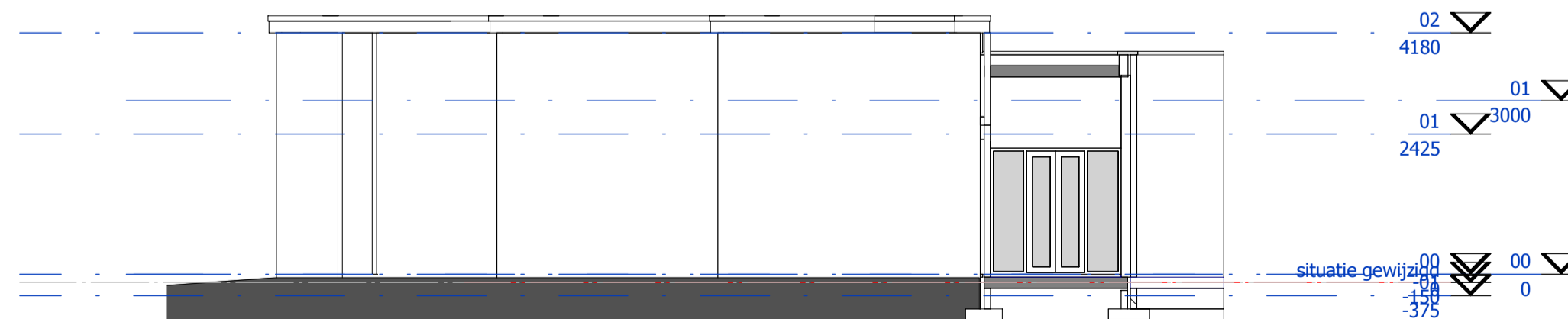
DRSN B\_best



DRSN C\_best



DRSN D\_best



DRSN E\_best

WIJZIGINGEN

wijziging	datum	bouwkundige	omschrijving
A			
B			
C			
D			

IAA  
Architecten

DULDEN  
HERONTWIKKELING ST. ELISABETH

<b>vestiging Enschede</b> M.H. Trompslaan 55, Postbus 729, 7500 AS Enschede Nederland T +31(0)653 480 44 44 F +31(0)653 480 44 88 E-mail info@iaa-architecten.nl	partnerarchitect <b>L.H. Bensen AvB</b> projectarchitect <b>C. Sandfort</b> projectmanager <b>H. Kokeler</b> bouwkundige <b>A.Kamphuis / R.Paalman</b>	datum <b>2013-04-05</b> schaal <b>1:100</b> formaat tekening <b>A1</b> bestandsnaam <b>Elisabeth.rvt</b>	opdrachtgever <b>Twinta</b> projectnummer <b>2009155AA</b> status <b>DEFINITIEF</b> tekening <b>OV-007</b>
--	---	---	---

BESTAANDE GEVELS EN DOORSNEDEN